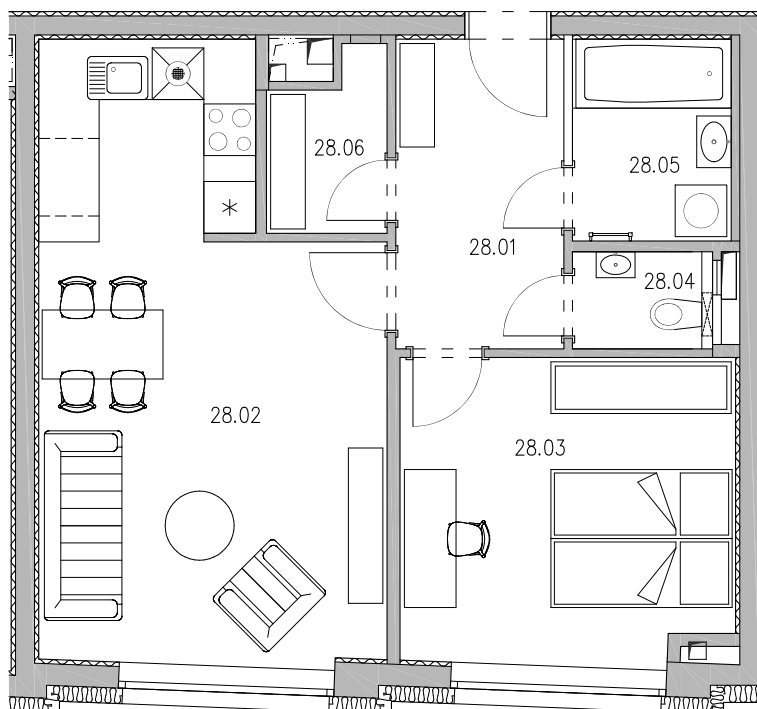


Dispozice: 2+KK Podlaží: 2. NP

Kupní cena vč. DPH:

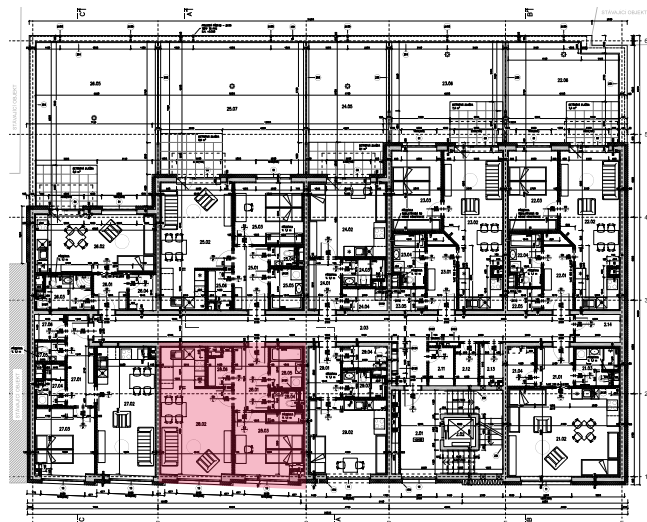
# 4.904.750 Kč

28.01 Chodba	7,00 m <sup>2</sup>
28.02 Obývací pokoj + Kuchyňský kout	25,62 m <sup>2</sup>
28.03 Ložnice	13,60 m <sup>2</sup>
28.04 WC	1,83 m <sup>2</sup>
28.05 Koupelna	4,31 m <sup>2</sup>
28.06 Komora	2,61 m <sup>2</sup>
Svislé konstrukce	3,56 m <sup>2</sup>
<b>Podlahová plocha</b>	<b>58,53 m<sup>2</sup></b>
1.30 Sklep v přízemí	3,59 m <sup>2</sup>

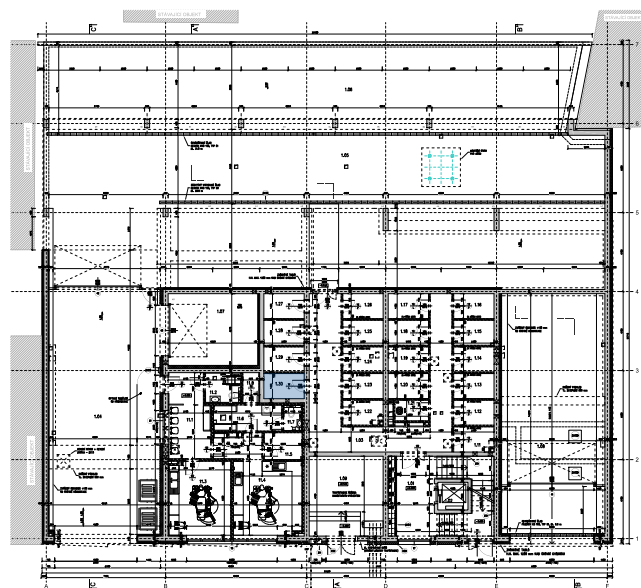


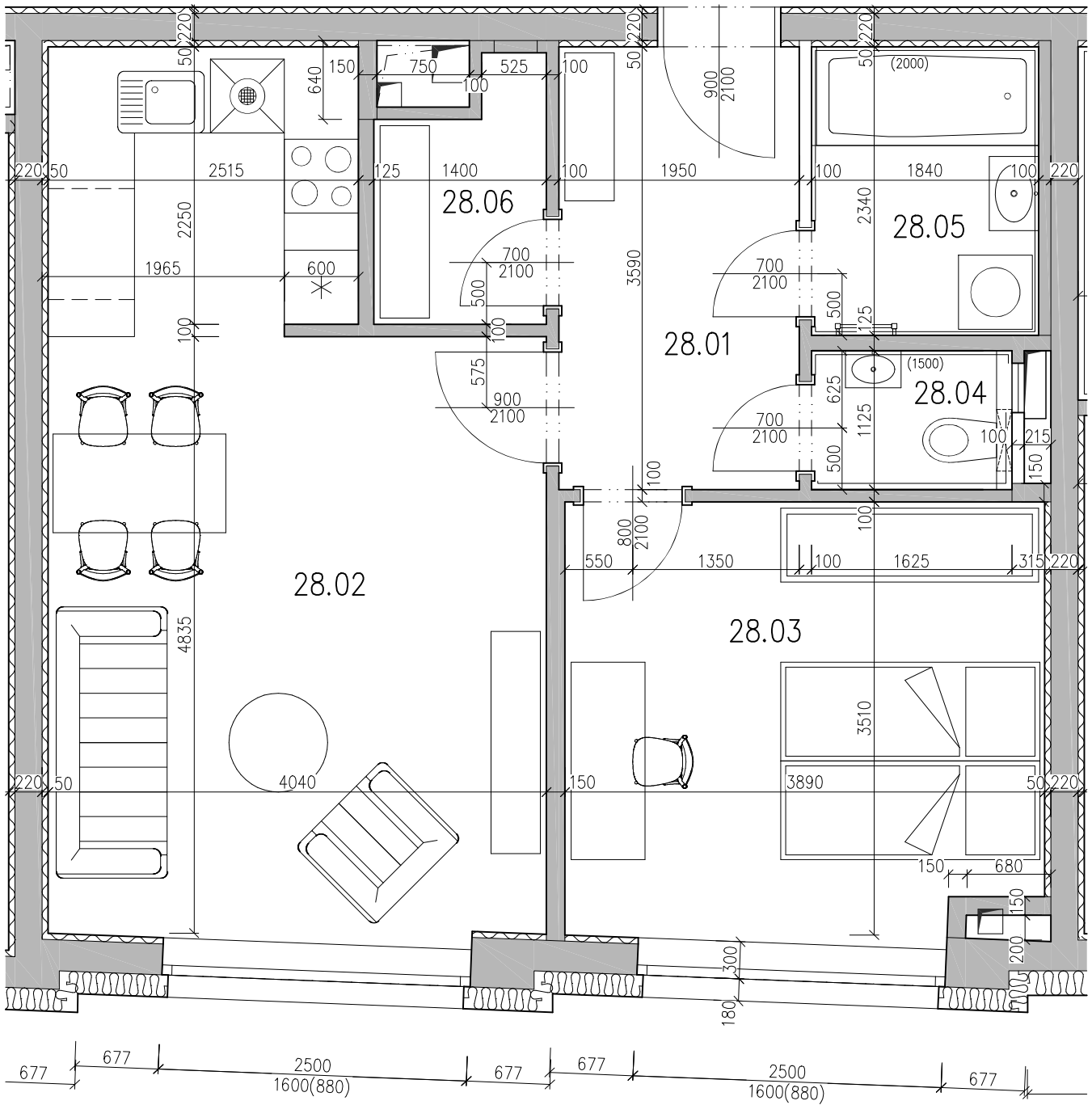
celková užitná plocha: **62,12 m<sup>2</sup>**

### 2. NP



### 1. NP

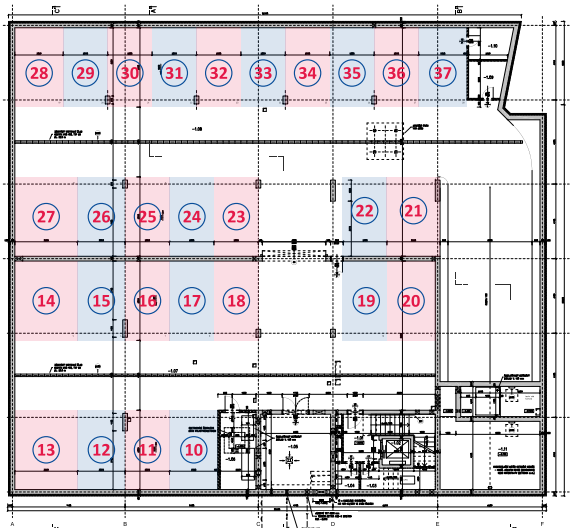




K bytu je možné zakoupit **parkovací stání.**



1. PP



1. NP

